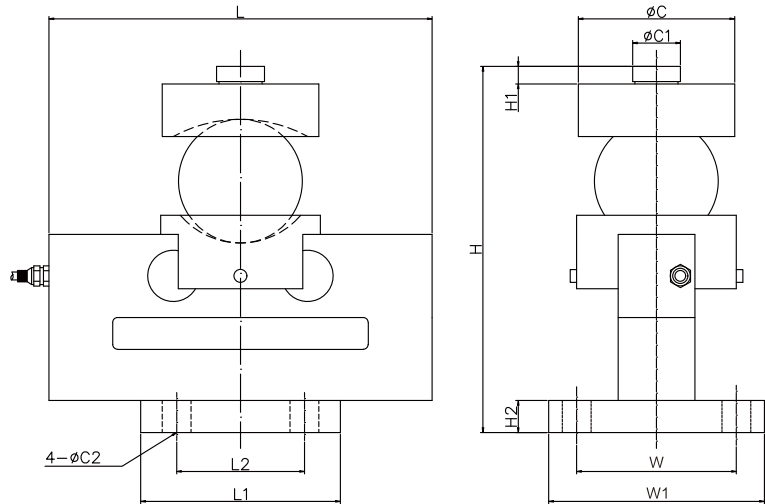
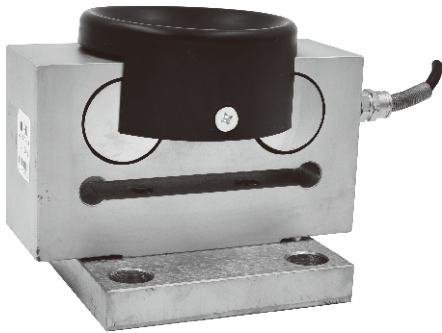


ALLOY STEEL / STAINLESS STEEL
合金钢/不锈钢



桥式称重传感器

尺寸 DIMENSIONS

Rate Capacity 量程	C	C1	C2	L	L1	L2	W	W1	H	H1	H2
t/mm											
10-40	88	30	18	155	125	80	135	100	199.3	8.0	20
lb/inches											
22.0klb-88.2klb	3.46	1.18	0.71	6.10	4.92	3.15	5.31	3.94	7.85	0.31	0.79

技术参数 SPECIFICATIONS

Full Scale Output 灵敏度输出	$2.0 \pm 0.1\% \text{mV/V}$	Recommended Excitation 使用电压	10V(15V Maximmm)
Zero Balance 零点输出	$\pm 0.02 \text{mV/V}$	Insulation Resistance 绝缘阻抗	$>2[50\text{V DC}] \text{G}\Omega$
Nonlinearity 非线性	$< \pm 0.03\%$	Nominal Temperature Range 工作温度	-10°C to 40°C / 14°F to 104°F
Repeatability 重复性	$< \pm 0.03\%$		
Hysteresis Error 滞后	$< \pm 0.03\%$	Safe Overload 安全过载	150% of full scale
Creep in 30 min 30分钟蠕变	$< \pm 0.05\%$	Breaking Overload 极限过载	300% of full scale
Input Resistance 输入电阻	$775\Omega \pm 5$	IP Rating 防护等级	IP67/IP68
Output Resistance 输出电阻	$702\Omega \pm 2$	Cable Color Code 颜色码	Exc(输入)+:Red(红);Exc(输入) -Black(黑);Sig(输出)+Green(绿); Sig(输出)-:Whit白 Shield Bare(屏蔽)
Element Materia 材质	Alloy steel/Stainless steel 合金钢/不锈钢		

612A

Special Features 特征

- ◆ 符合OIML认证指标
- ◆ 易于安装, 性能稳定
- ◆ 防爆级(Ex ib II CT4)
- ◆ 合金钢/不锈钢
- ◆ Comply with OIML C3
- ◆ Easy installation reliable performance
- ◆ Explosion proof version (Ex ib II CT4)
- ◆ Alloy/Stainless steel available!