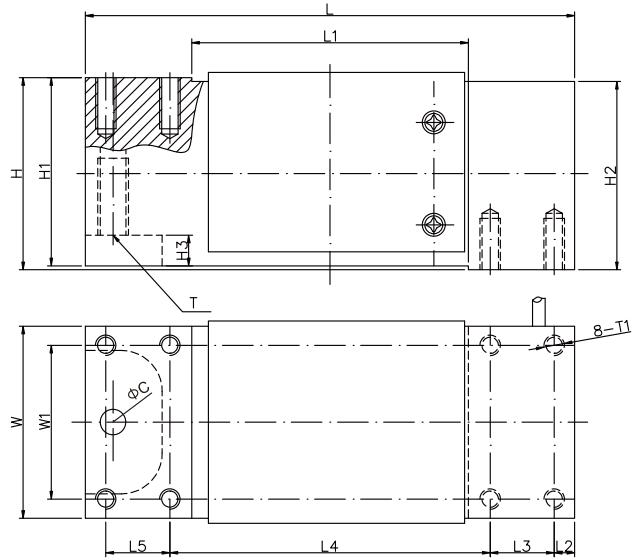


## ALUMINUM 铝合金



### 尺寸 DIMENSIONS

#### Rate Capacity 量程

	C	L	L1	L2	L3	L4	L5	W	W1	H	H1	H2	H3	T	T1
kg/mm															
50-1000	10	191	108	8	25	125	25	75	60	75	73.5	73.5	12	M12深30	M8深20
lb/inches(conversion of above dimensions 由以上尺寸转换)															
110.23-2204.6	0.39	7.52	4.25	0.31	0.98	4.92	0.98	2.95	2.36	2.95	2.89	2.89	0.47	M12DP1.18	M8DP0.79

### 技术参数 SPECIFICATIONS

Full Scale Output 灵敏度输出	$2.0 \pm 10\% \text{mV/V}$	Recommended Excitation 使用电压	10V(15V Maximmm)
Zero Balance 零点输出	$\pm 0.02 \text{mV/V}$	Reference Max.Platform Size 最大秤台尺寸	750*750mm
Nonlinearity 非线性	$< \pm 0.017\%$	Insulation Resistance 绝缘阻抗	$> 2[50 \text{V DC}] \text{G}\Omega$
Repeatability 重复性	$< \pm 0.017\%$	Nominal Temperature Range 工作温度	$-10^\circ\text{C}$ to $40^\circ\text{C}$ / $14^\circ\text{F}$ to $104^\circ\text{F}$
Hysteresis Error 滞后	$< \pm 0.017\%$	Safe Overload 安全过载	150% of full scale
Creep in 30 min 30分钟蠕变	$< \pm 0.02\%$	Breaking Overload 极限过载	200% of full scale
Input Resistance 输入电阻	$415 \Omega \pm 15$	IP Rating 防护等级	IP67
Outnput Resistance 输出电阻	$350 \Omega \pm 3$	Cable Color Code 颜色码	Exc(输入)+:Red(红);Exc(输入)-:Black(黑);Sig(输出)+:Green(绿);Sig(输出)-:Whit白 Shield Bare(屏蔽)
Element Materia 材质	Aluminum 铝合金		

## 698A

### Special Features 特征

- ◆ 符合OIML认证指标,分度值达5000
- ◆ 角差修正
- ◆ IP7防护
- ◆ 双剪切梁或三梁结构
- ◆ Complies with OIML C3 up to 5000 division
- ◆ Off-center load compensated
- ◆ IP67 protection
- ◆ Double shear beam or triple beam