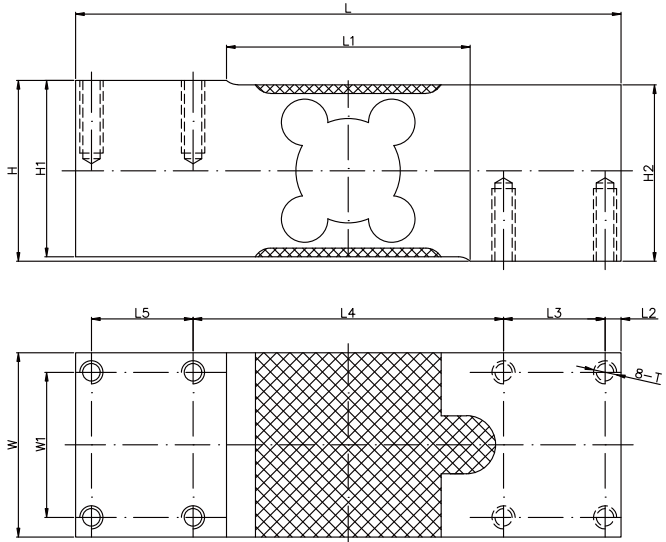
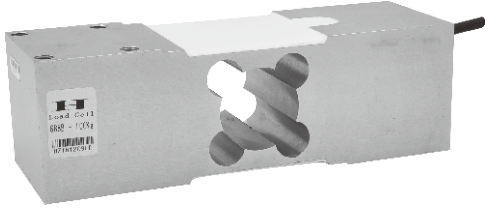


688B

ALUMINUM 铝合金



尺寸 DIMENSIONS

Rate Capacity

量程	L	L1	L2	L3	L4	L5	W	W1	H	H1	H2	T
kg/mm												
50-1000	188	84	5.5	35	107	35	63.5	50	62.3	60.8	60.8	M8深20
lb/inches(conversion of above dimensions 由以上尺寸转换)												
110.23-2204.6	7.40	3.31	0.22	1.38	4.21	1.38	2.50	1.97	2.45	2.39	2.39	M8DP.79

技术参数 SPECIFICATIONS

Full Scale Output 灵敏度输出	2.0 ± 10% mV/V	Recommended Excitation 使用电压	10V(15V Maximmm)
Zero Balance 零点输出	± 0.02mV/V	Reference Max.Platform Size 最大秤台尺寸	600*600mm
Nonlinearity 非线性	< ± 0.017%	Insulation Resistance 绝缘阻抗	>2[50V DC]G Ω
Repeatability 重复性	< ± 0.017%	Nominal Temperature Range 工作温度	-10°C to 40°C / 14°F to 104°F
Hysteresis Error 滞后	< ± 0.017%	Safe Overload 安全过载	150% of full scale
Creep in 30 min 30分钟蠕变	< ± 0.02%	Breaking Overload 极限过载	200% of full scale
Input Resistance 输入电阻	405 Ω ± 15	IP Rating 防护等级	IP66
Output Resistance 输出电阻	350 Ω ± 3	Cable Color Code 颜色码	Exc(输入)+:Red(红);Exc(输入)-:Black(黑);Sig(输出)+:Green(绿);Sig(输出)-:Whit白 Shield Bare(屏蔽)
Element Materia 材质	Aluminum 铝合金		

688B

Special Features 特征

- ◆ 符合OIML认证指标
- ◆ 角差修正
- ◆ IP66防护
- ◆ Comply with OIML C3
- ◆ Off-center load compensated
- ◆ IP66 protection